

**SCAGLIA**  
**GROUP**

**Ideas**  
that change the  
mechatronic world.



# SCAGLIA GROUP, A history of passion and technology.

SCAGLIA GROUP of today was established in 1838, when we started to manufacture wooden bobbins for the textile industry. From this distant beginning, we have grown into a diverse group of companies providing a wide range of products and solutions.

We continue to support the textile industry through SCAGLIA S.r.l. now using modern materials including polymers and light alloys.

Power transmission components and motion control solutions come from SIT S.p.A. and SIT Automation, while MELUCCI S.r.l. deals with linear motion.

ELATECH S.r.l. is responsible for the design and manufacture of polyurethane belts. In 2004 the material handling and industrial manipulator interests were brought together under the INDEVA banner.

Across the Group, today still owned by the Scaglia family, our focus is on **continuous innovation and development** using leading-edge technology in materials research, mechanics, pneumatics and electronics. With a team of **1000 employees**, a broad network of subsidiaries and distributors in Europe, America and Asia we serve our customers providing **first class support and service all around the world**.



1920

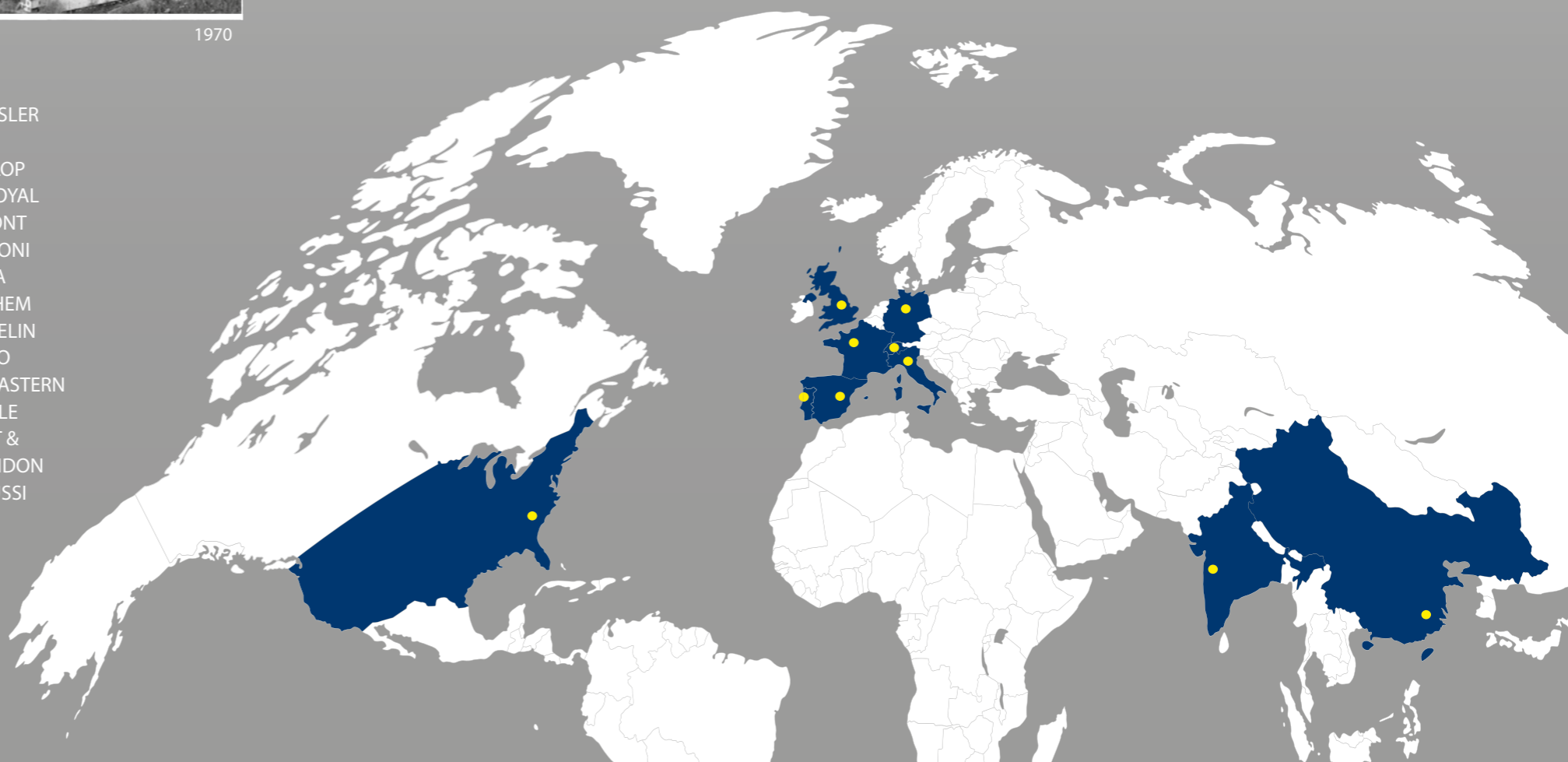
1940

1950

1970

**REFERENCES**

- |                |                  |                |             |
|----------------|------------------|----------------|-------------|
| 3M             | PHILIP MORRIS    | REYNOLDS       | CHRYSLER    |
| FERRARI        | GOODYEAR         | TOBACCO        | UNIFI       |
| MONSANTO       | PIAGGIO          | ITALTEL        | DUNLOP      |
| ABB            | BANQUE DE        | RHONE POULENC  | UNIROYAL    |
| FERRERO        | FRANCE           | CIBA GEIGY     | DUPONT      |
| NESTLÉ         | BANK OF ENGLAND  | JOHNSON &      | MERLONI     |
| AKZO FIBERS    | HEWLETT          | JOHNSON        | VARTA       |
| FIAT           | PACKARD          | SAAB / SCANIA  | ENICHEM     |
| NISSAN         | PIRELLI          | CITROEN        | MICHELIN    |
| AMOCO FABRICS  | BEKAERT          | KELLOGGS       | VOLVO       |
| FIRESTONE      | HOECHST          | SARA LEE       | FAR EASTERN |
| PECHINEY       | PPG              | COCA COLA      | TEXTILE     |
| OPEL           | BMW              | KIMBERLY CLARK | MOET &      |
| APRILIA        | HOECHST          | SHELL          | CHANDON     |
| FORD           | CELANESE         | COMAU          | ZANUSSI     |
| PEUGEOT        | PROCTER & GAMBLE | KODAK          |             |
| AUDI           | BRITISH AMERICAN | STILL          |             |
| GENERAL MOTORS | TOBACCO          | CONTINENTAL    |             |
| PHARMACIA LEO  | IBM              | KRAFT GENERAL  |             |
| THERAPEUTICS   | RENAULT          | FOODS          |             |
| B.P. CHEMICALS | ROLLS ROYCE      | THYSSEN        |             |
| GLAXO          | ISUZU            | DAIMLER        |             |



# SIT

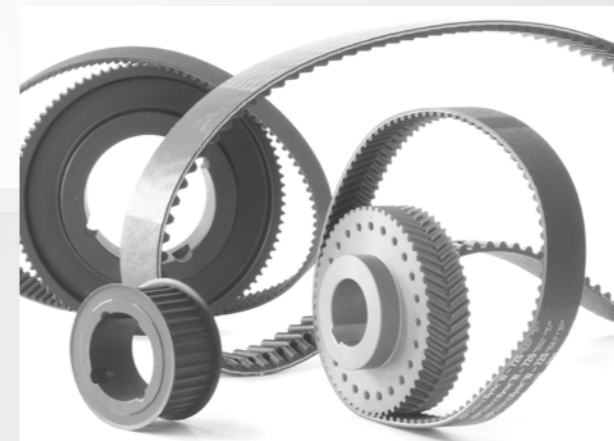
The Power Transmission Company.

For over 50 years, SIT group has been developing, engineering, manufacturing and distributing **high quality solutions and components for motion transmission**. Our aim is to **increase the productivity and reliability** of our customers' industrial machinery and plants.

SIT group has seven companies and production centres in three continents along with our headquarters in Italy, which offer solutions, flexibility and reliability on a global scale. Our important international presence provides guaranteed production consistency, project consultancy, technical assistance, complete stock availability, always fast and direct service along with quality products "worldwide".

Our international team of engineers is dedicated to research and development and works in technology centres equipped with advanced test benches for dynamic tests. Our raw material and finished products undergo tests and controls which ensure the highest quality. We constantly innovate and develop under our group philosophy which uses common proprietary technologies to provide specific market solutions.

The main group objective is to guide continuous improvement through the development of our engineers with constant leadership and training.

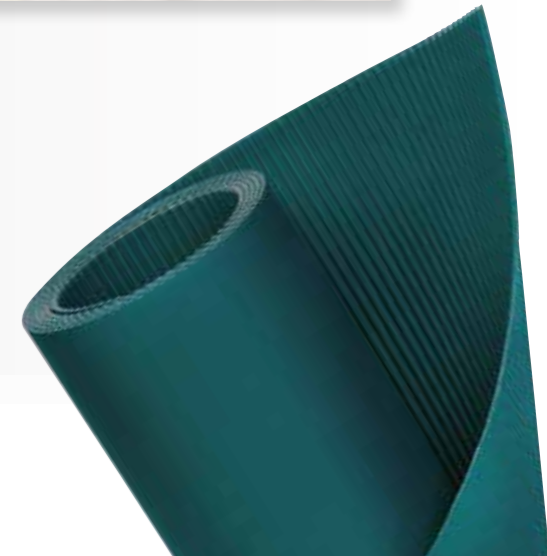
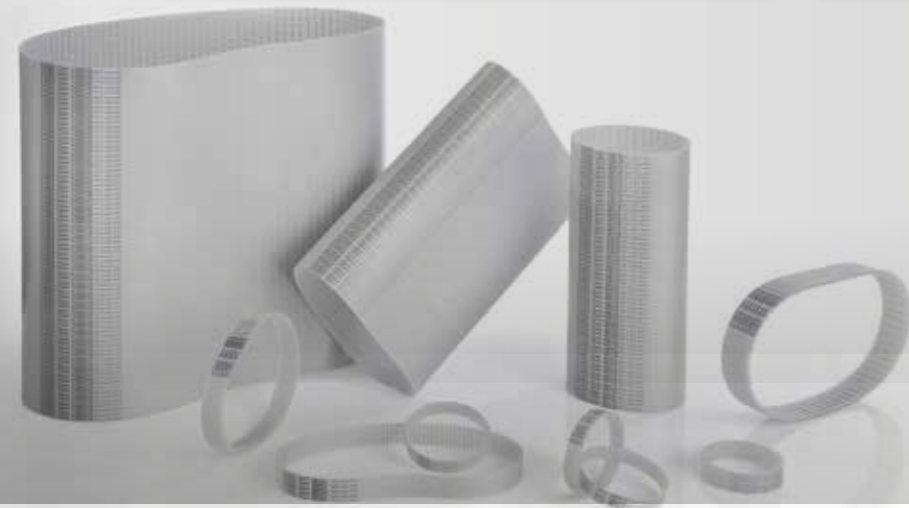
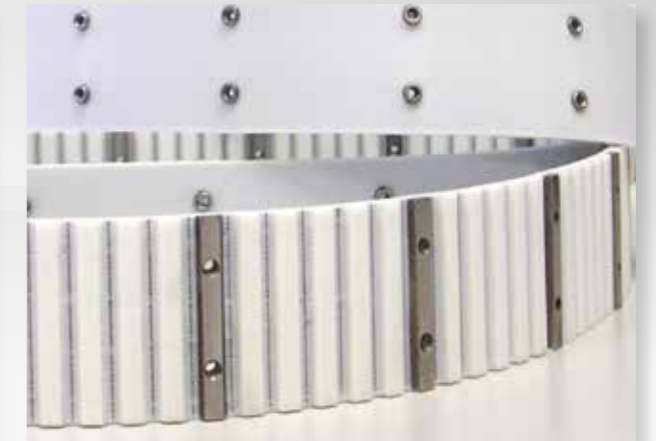
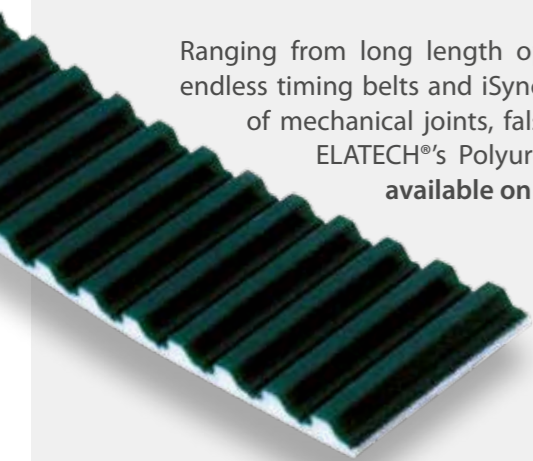


# Elatech®

Polyurethane Belts.

ELATECH® S.r.l is a Company fully dedicated to the research, development and manufacture of polyurethane belts for industrial applications. The **unique manufacturing processes**, realized with the newest generation technologies, modern and efficient test and control equipment and a **unique team of qualified technicians and engineers**, allow ELATECH® to offer superior products and highly flexible service. Meeting the highest quality standards in terms of tolerance, performance and durability, ELATECH®'s Polyurethane Belts find a **wide range of applications** in different fields of industry, including conveying, lifting and power transmission.

Ranging from long length open end rolls to welded or ELA-flex SD® truly endless timing belts and iSync® sleeves, and complemented by a wide choice of mechanical joints, false teeth, backings, cleats and other accessories, ELATECH®'s Polyurethane Belts provide the **most extensive offer available on the market.**



# Indeva

Intelligent Devices for Handling and Lean Manufacturing solutions.

SCAGLIA INDEVA S.p.A. is a market leader in the development, design and manufacture of Intelligent Devices for Handling and Lean Manufacturing solutions. Our Company mission is simple and effective: to provide our Customers with safe, ergonomically sound solutions to **increase productivity and quality of production**.

SCAGLIA INDEVA has **wide experience in all industry sectors** and especially Automotive, Aerospace, Pharmaceutical, Engineering and Food and Drink. Our design department brings together our advanced control systems and **custom made gripping systems** to meet all aspects of product manipulation and work cycle demands. We aim to provide an answer that is as close as possible to the "human" solution.

With an increasing **international network of subsidiaries and qualified distributors**, SCAGLIA INDEVA can support both local requirements and those from customers operating on a global basis.

SCAGLIA INDEVA also designs, manufactures and delivers **modular structures made with INDEVA LEAN SYSTEM® components and AGV based solutions**. Together with our Intelligent Devices for Handling, SCAGLIA INDEVA can provide the complete answer for **Lean Manufacturing applications**.



# Scaglia

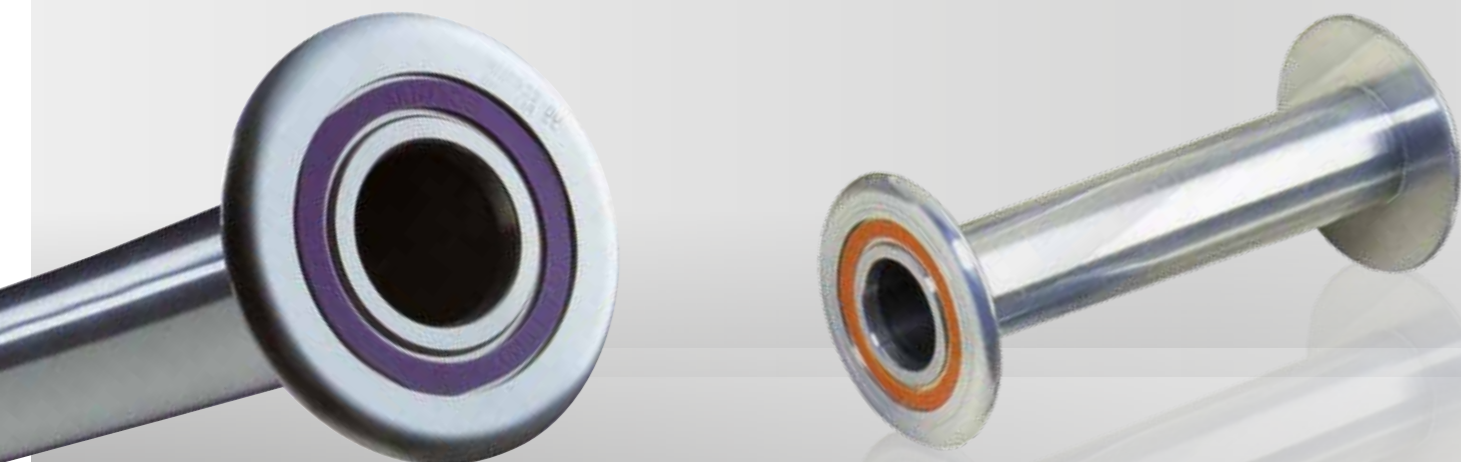
Accessories for textile machines.

Group's historical company established in 1838, SCAGLIA S.r.l. is a **highly recognized brand worldwide** for textile machinery accessories. The company manufactures spools and tubes made of light alloys and plastics. Very **active in research and development** and owner of numerous patents, in recent years SCAGLIA has developed an innovative **friction welding system** for welding together metals of different nature.

Thanks to this technology, SCAGLIA is emerging as favored supplier of upscale products for automotive companies and innovative industrial product manufacturers.

With its core products SCAGLIA is the **world leader in the production of textile accessories**, including aluminium and plastic alloy yarn carriers such as flanged bobbins, tubes, cylinders and cones. The product range also includes yarn waste removing machines.

*Scaglia*  
1838



# SIT Automation

Automation and mechatronic solutions.

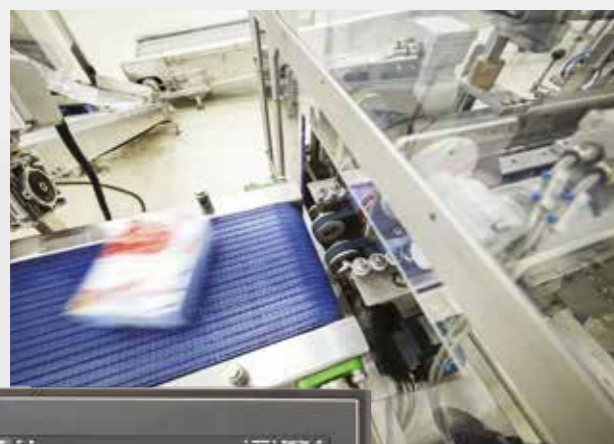
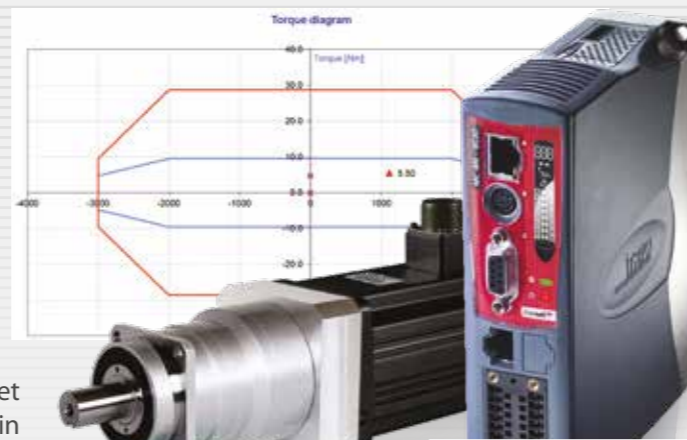
SIT Automation S.r.l. meets the Italian and European market as a reliable supplier of excellent solutions and products in mechatronic applications.

Thanks to years of experience in the motion and automation fields, our team offers a premium support in designing innovative and competitive industrial automation solutions.

SIT Automation provides complete, customized and well-tested solutions to OEMs and system integrators, according to customer design specifications and offering the best cost-performance balance.

SIT Automation offers engineering services together with components, like servo systems, motion controllers, human machine interfaces and cloud solutions to meet Industry 4.0 requirements.

Our training programs offer a good opportunity for professional growth with our partners, in collaboration with our major suppliers.



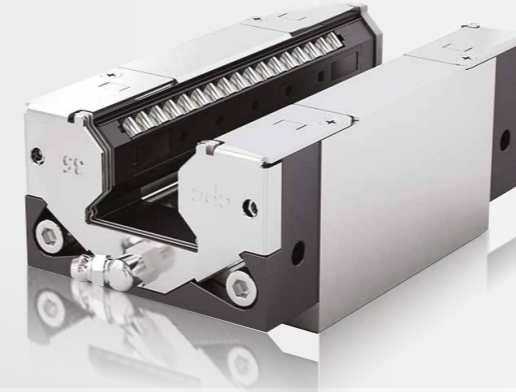
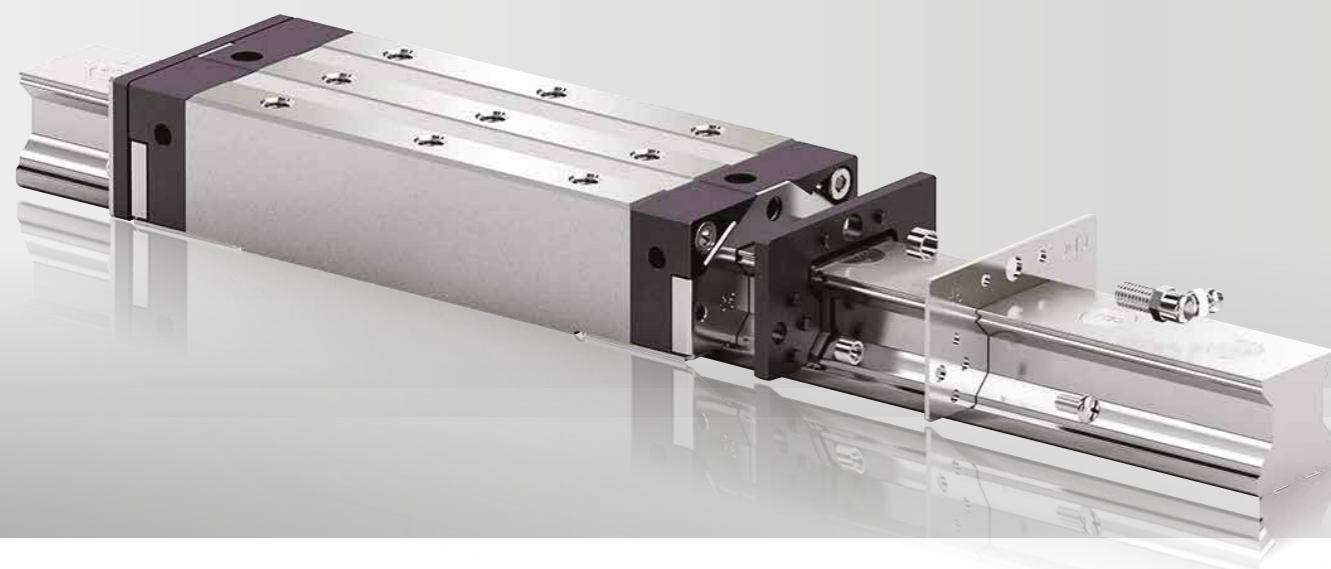
# Melucci

Melucci, the linear motion specialist.

MELUCCI s.r.l. is a specialised leader in the Italian linear motion market with over 50 years of history in distributing and tailoring high quality industrial solutions. MELUCCI linear motion systems offer high performance solutions in critical applications, ensuring excellent reliability in high speed and heavy duty industries.

## Technology and Logistics

Our goal is to offer our customers the right solution, by understanding the application technical needs, identifying the most suitable combination of components, and then promptly supplying the full kit of components. This is why MELUCCI decided to make its wide range of products available from stock with fast delivery through a modern logistics and manufacturing centre.







## ITALY

**SIT S.p.A.**  
I - 20090 Cusago (MI)  
I - 24012 Val Brembilla (BG)  
www.sitspa.it  
info@sitspa.it

**ELATECH S.r.l.**  
I - 24012 Val Brembilla (BG)  
www.elatech.com  
info@elatech.com

**SCAGLIA INDEVA S.p.A.**  
I - 24012 Val Brembilla (BG)  
www.indevagroup.com  
info@it.indevagroup.com

**SCAGLIA S.r.l.**  
I - 24012 Val Brembilla (BG)  
www.scaglia.it  
sales@scaglia.it

**SIT AUTOMATION S.r.l.**  
I - 20090 Cusago (MI)  
www.sitautomation.it  
info@sitautomation.it

**MELUCCI S.r.l.**  
I - 47921 Rimini (RN)  
www.melucci.it  
info@melucci.it

## SPAIN



**DINAMICA**  
**DINAMICA DISTRIBUCIONES S.A.**  
E - 08740 S. Andreu De La Barca (BCN)  
www.dinamica.net  
dinamica@dinamica.net

**mecanica moderna**  
**MECANICA MODERNA S.A.**  
E - 08005 Barcelona  
www.mecmod.com  
mecmod@mecmod.com



## PORTUGAL

**mecanica moderna**  
**MECÂNICA MODERNA S.A.**  
P - 4400-335 Vila Nova de Gaia  
www.mecmod.pt  
vendas@mecmod.com



## INDIA

**SIT PTC INDIA PVT. LTD.**  
IN - 412115 Pune - Maharashtra  
E-mail: a.nangre@sitspa.it  
Web: www.sitspa.com



## FRANCE



**FOGEX**  
F - 95103 Argenteuil Cedex  
www.fogex.com  
info@fogex.com

**SCAGLIA INDEVA SARL**  
F - 95100 Argenteuil  
www.indevagroup.fr  
info@fr.indevagroup.com

## UNITED KINGDOM

**SCAGLIA INDEVA Ltd**  
UK - Chesterfield, Derbyshire S45 9JW  
www.indevagroup.com  
info@uk.indevagroup.com

## GERMANY

**SIT ANTRIEBSELEMENTE GmbH**  
D - 33034 Brakel  
www.sit-antriebselemente.de  
info@sit-antriebselemente.de

**SCAGLIA INDEVA GmbH**  
D - 73249 Wernau  
www.indevagroup.de  
info@de.indevagroup.com

## SWITZERLAND

**SIT (Schweiz) AG**  
CH - 8370 Sirnach  
www.sit-antriebstechnik.ch  
info@sit-antriebstechnik.ch

## SCANDINAVIA

**Scaglia INDEVA Nordic AB**  
Helsingborg - Sweden  
www.indeva.se  
info@se.indevagroup.com

## U.S.A.

**S.I.T. INDEVA, Inc.**  
USA - Charlotte, NC 28217  
www.sit-indeva.com  
info@sit-indeva.com

## CHINA

**SIT INDEVA (SHANGHAI) LTD.**  
PRC - 201300 Shanghai  
www.sit-shanghai.com  
info@sit-shanghai.com

## RUSSIA

**Scaglia INDEVA Rus LLC**  
RUS - Moscow - Kaluzhskoye shosse  
www.indevagroup.ru  
grigory@ru.indevagroup.com